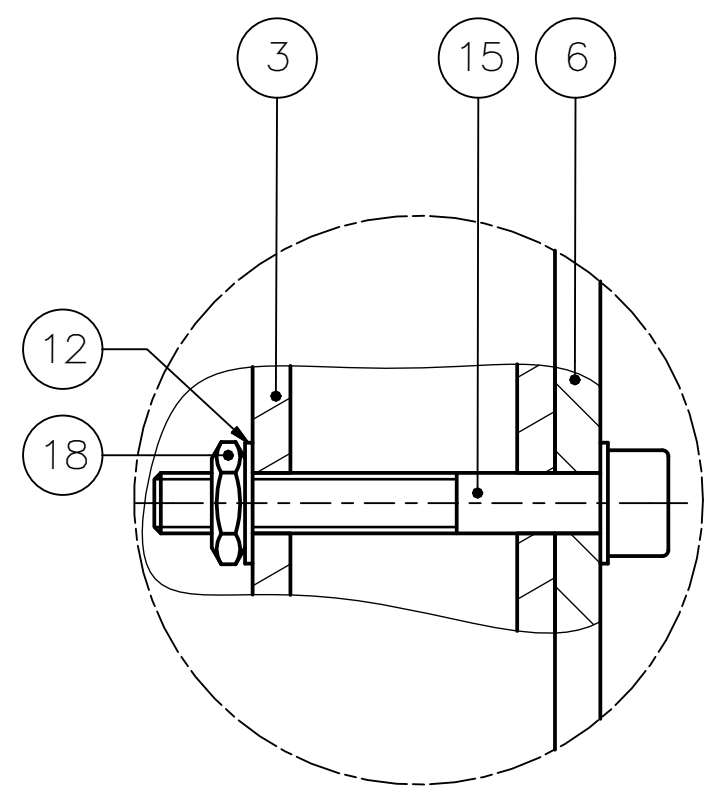
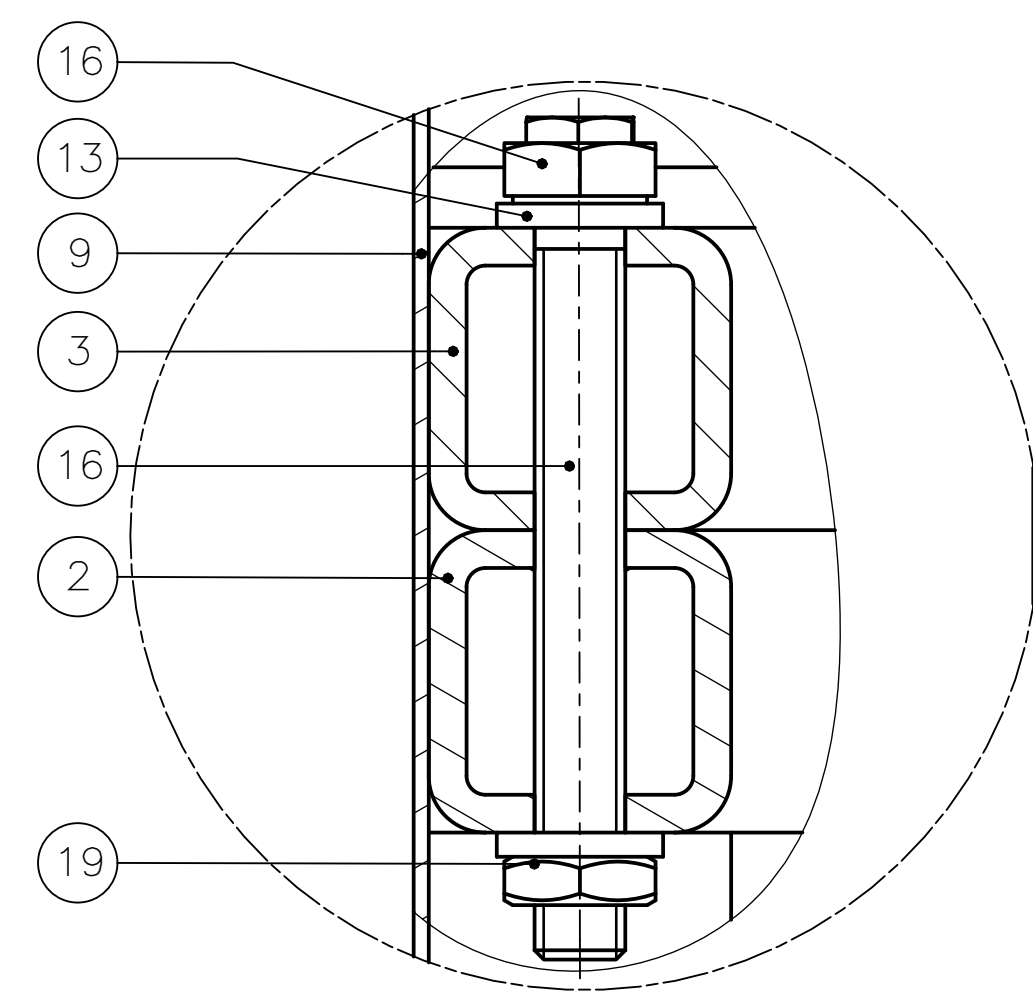


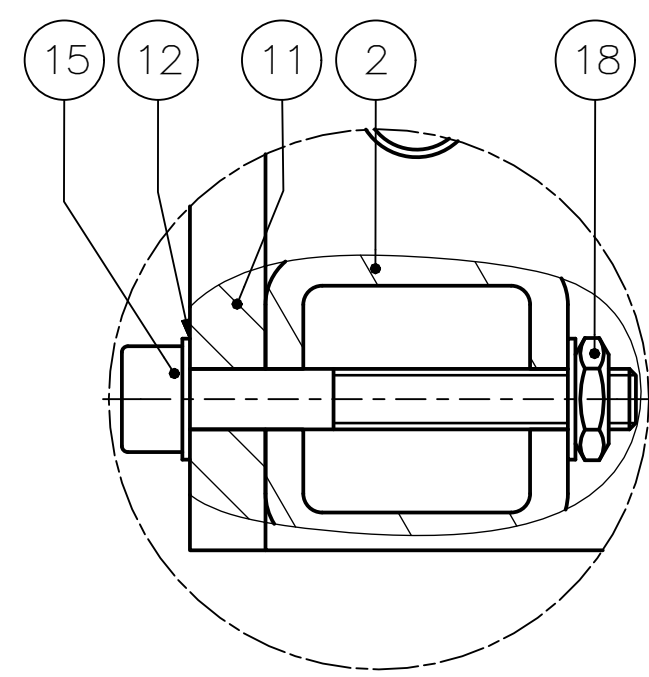
DETALLE A  
ESCALA 2 : 1



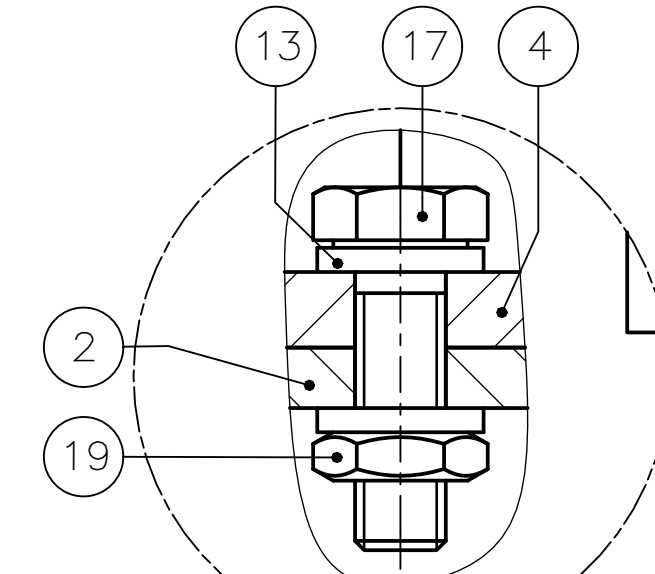
DETALLE B  
ESCALA 2 : 1



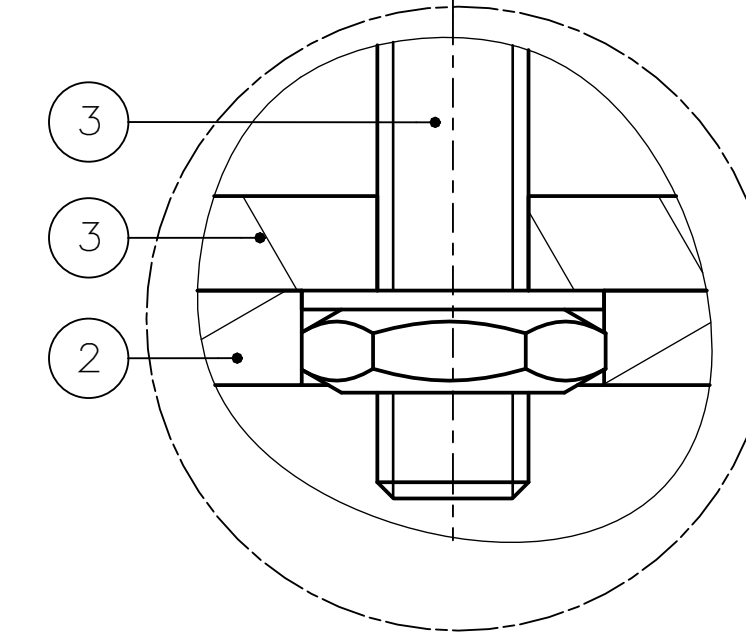
DETALLE C  
ESCALA 2 : 1



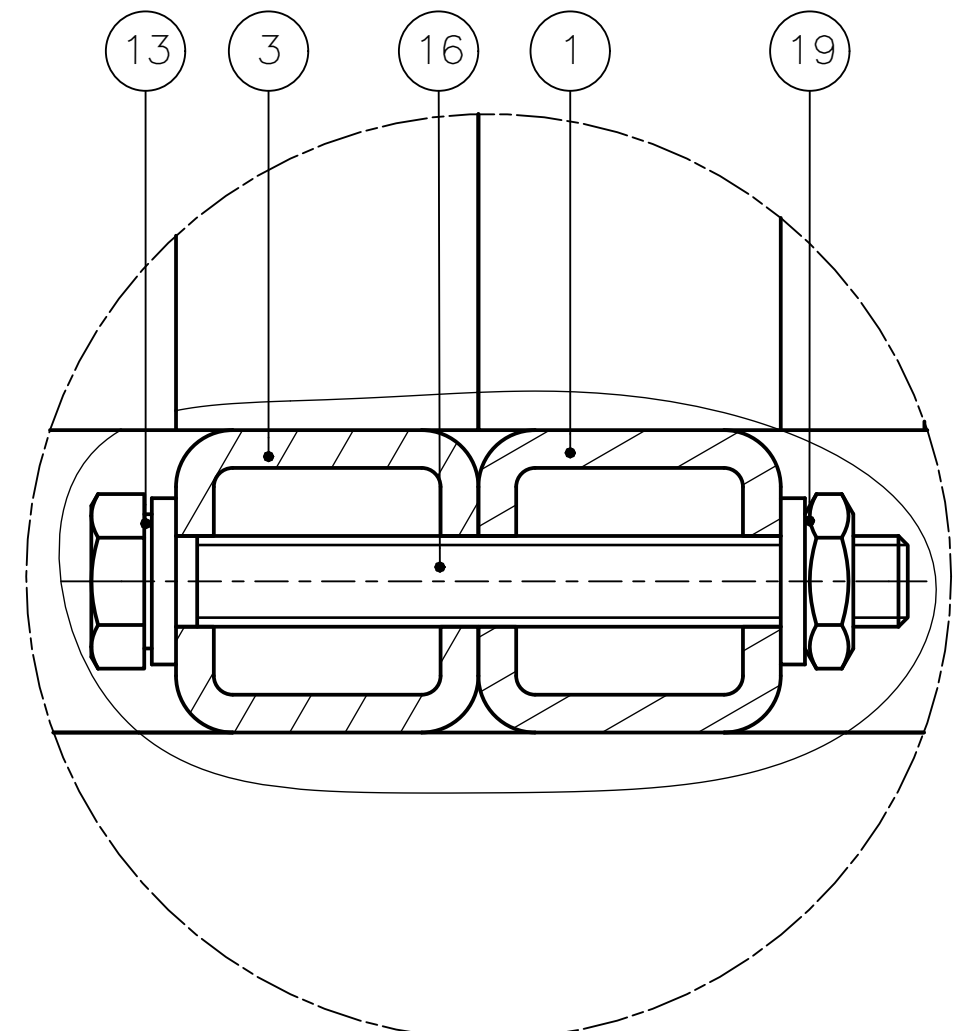
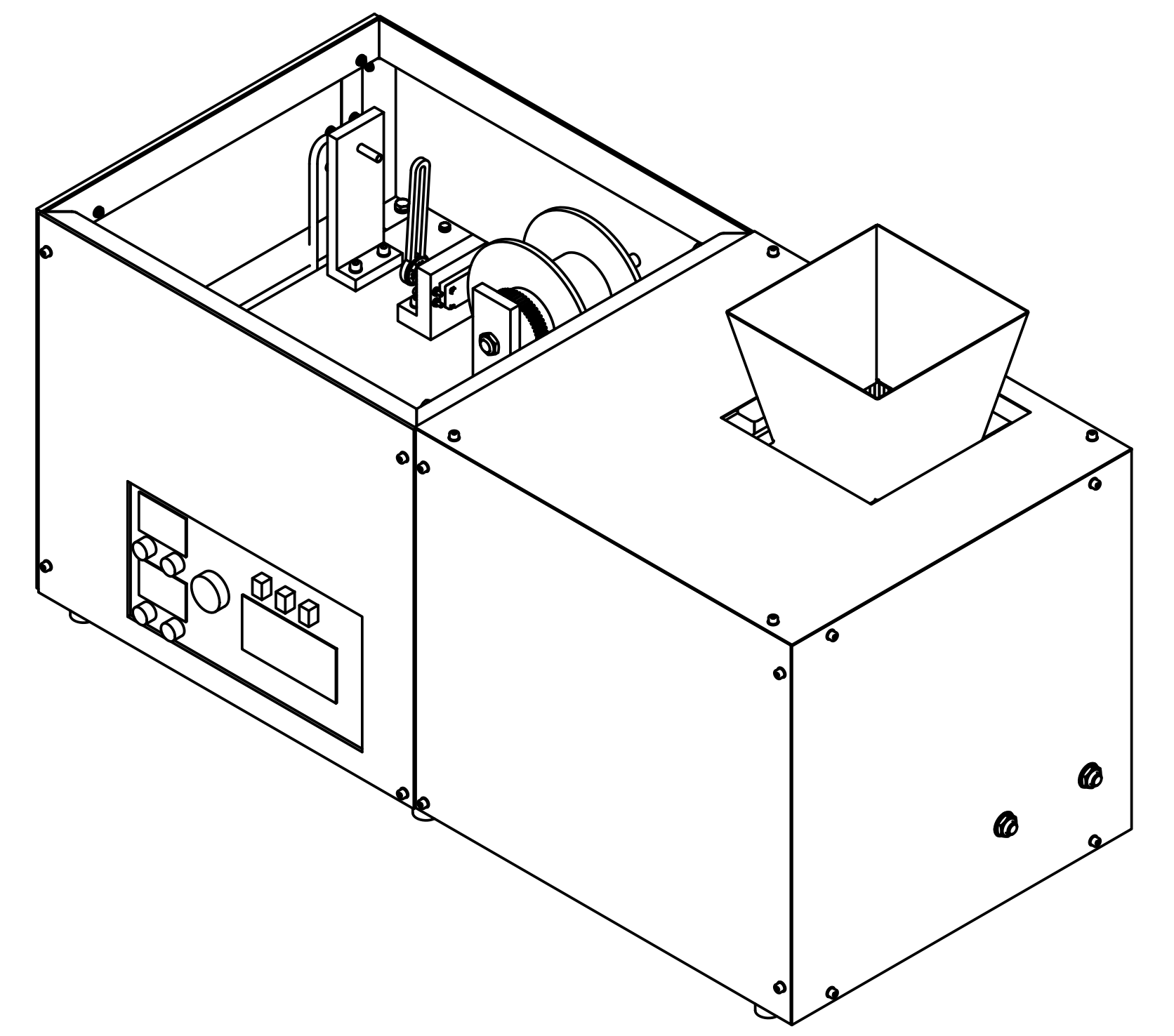
DETALLE D  
ESCALA 2 : 1



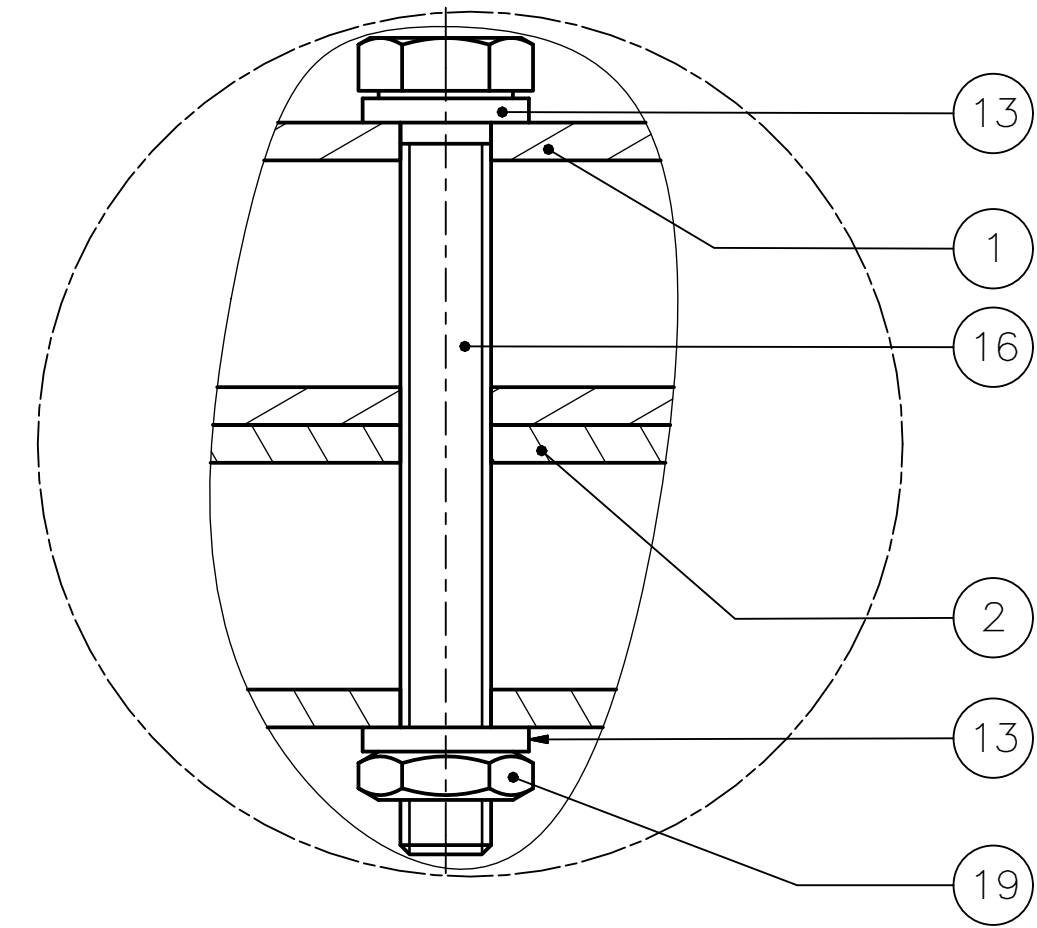
DETALLE E  
ESCALA 2 : 1



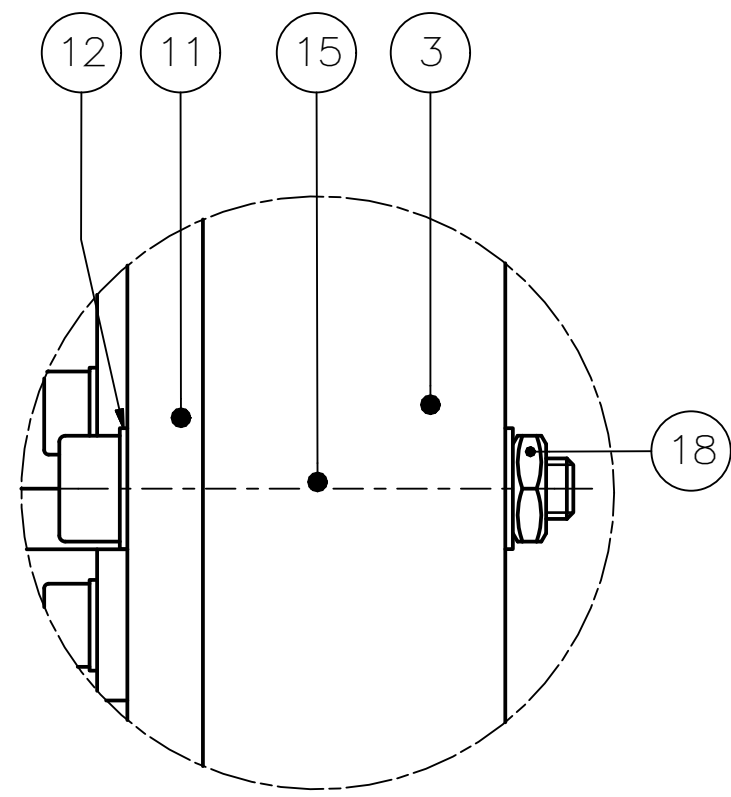
DETALLE F  
ESCALA 5 : 1



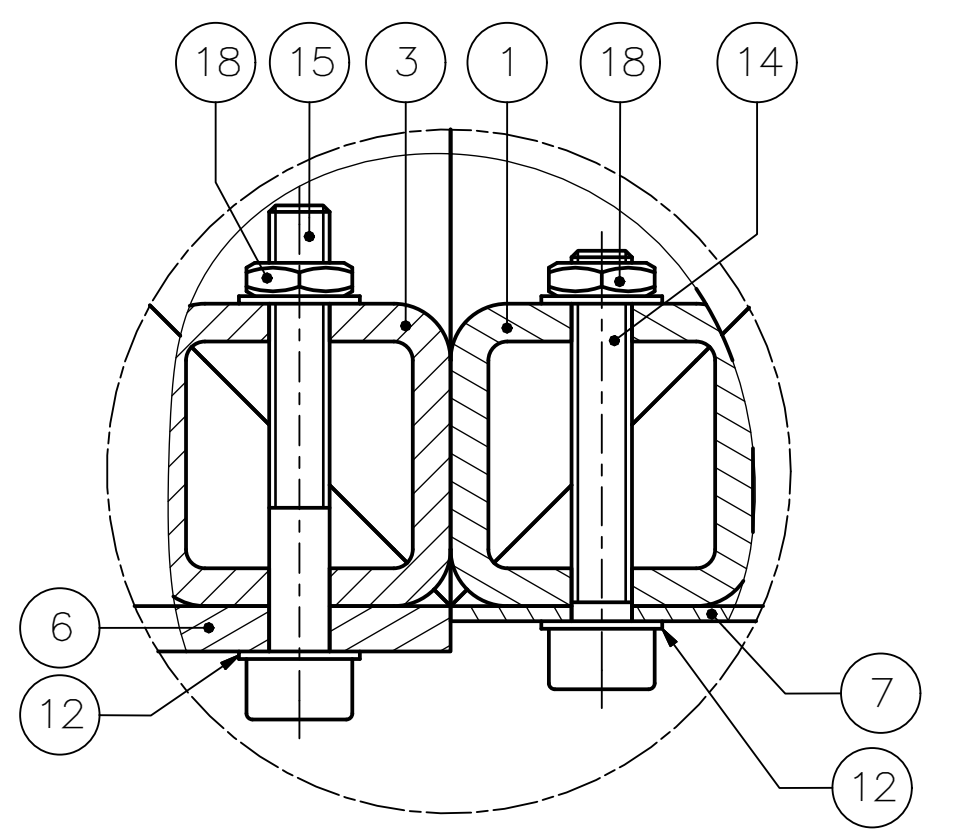
DETALLE G  
ESCALA 2 : 1



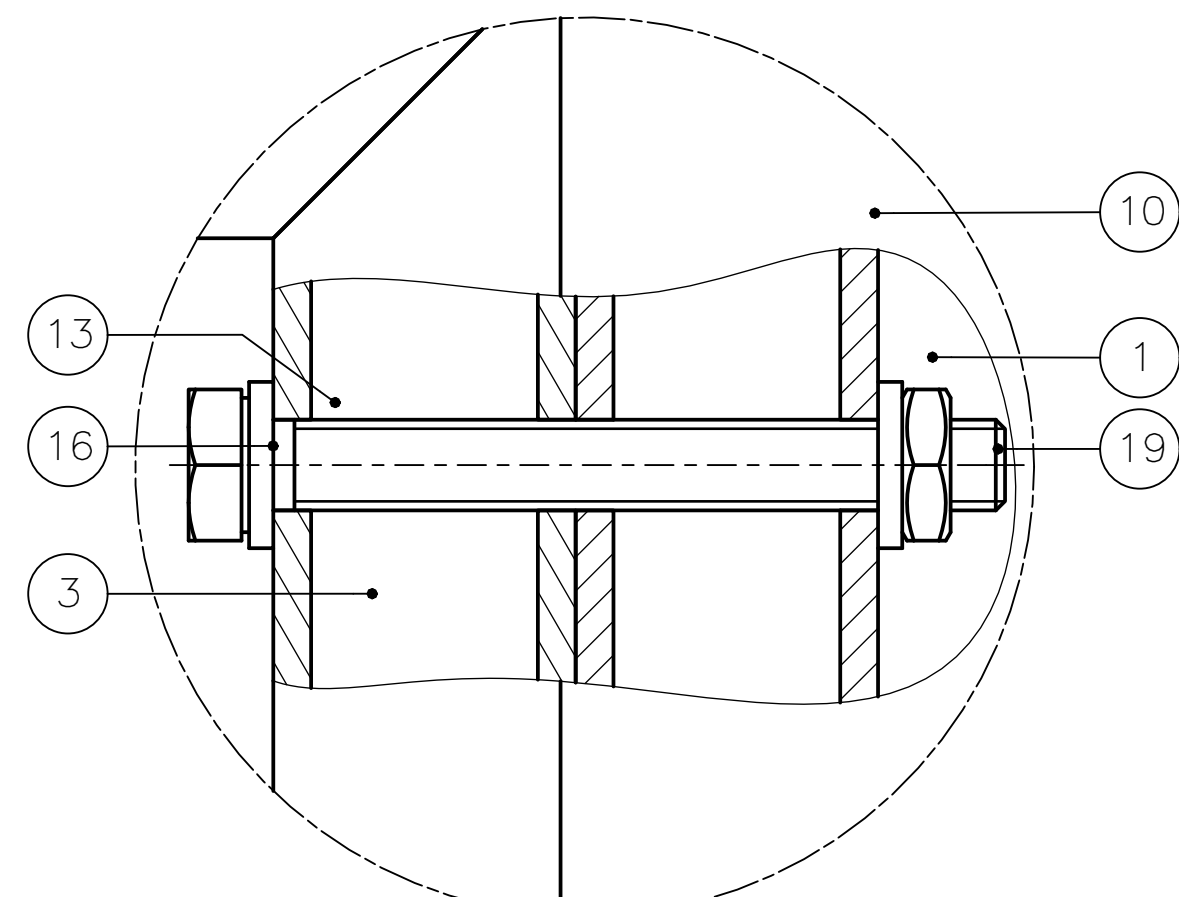
DETALLE H  
ESCALA 2 : 1



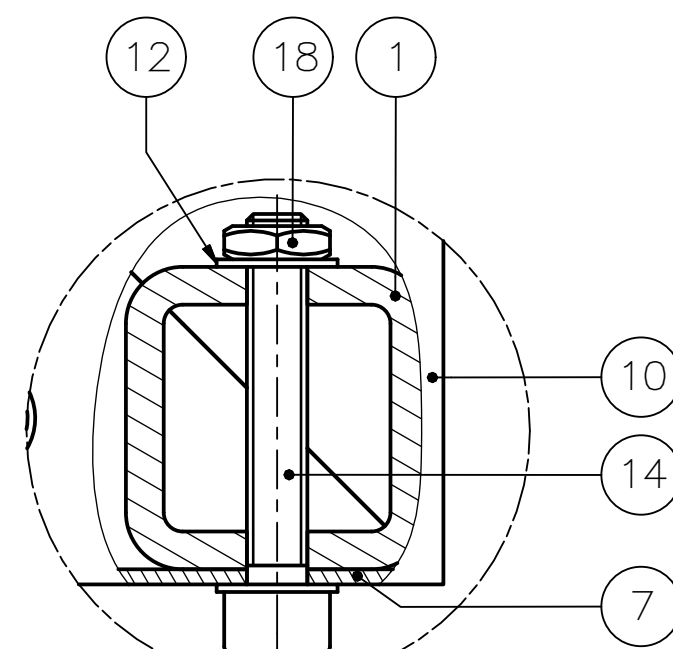
DETALLE I  
ESCALA 2 : 1



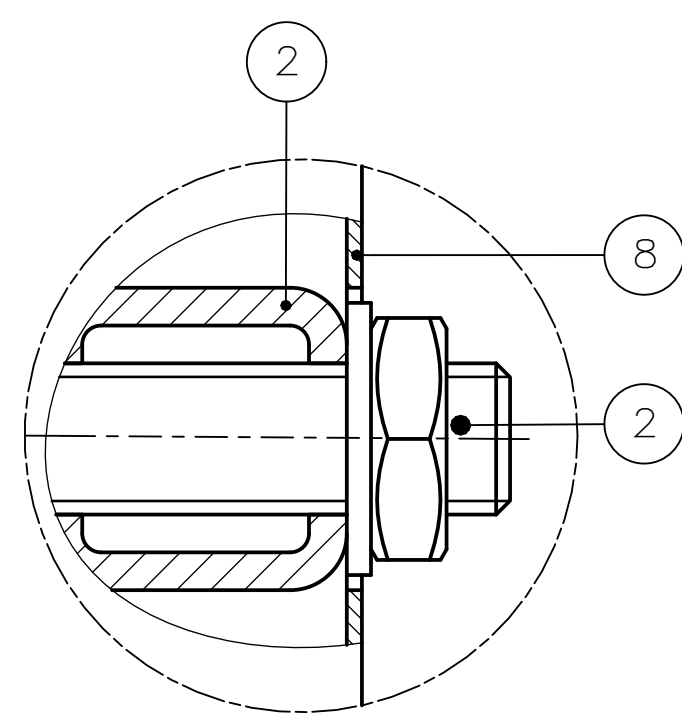
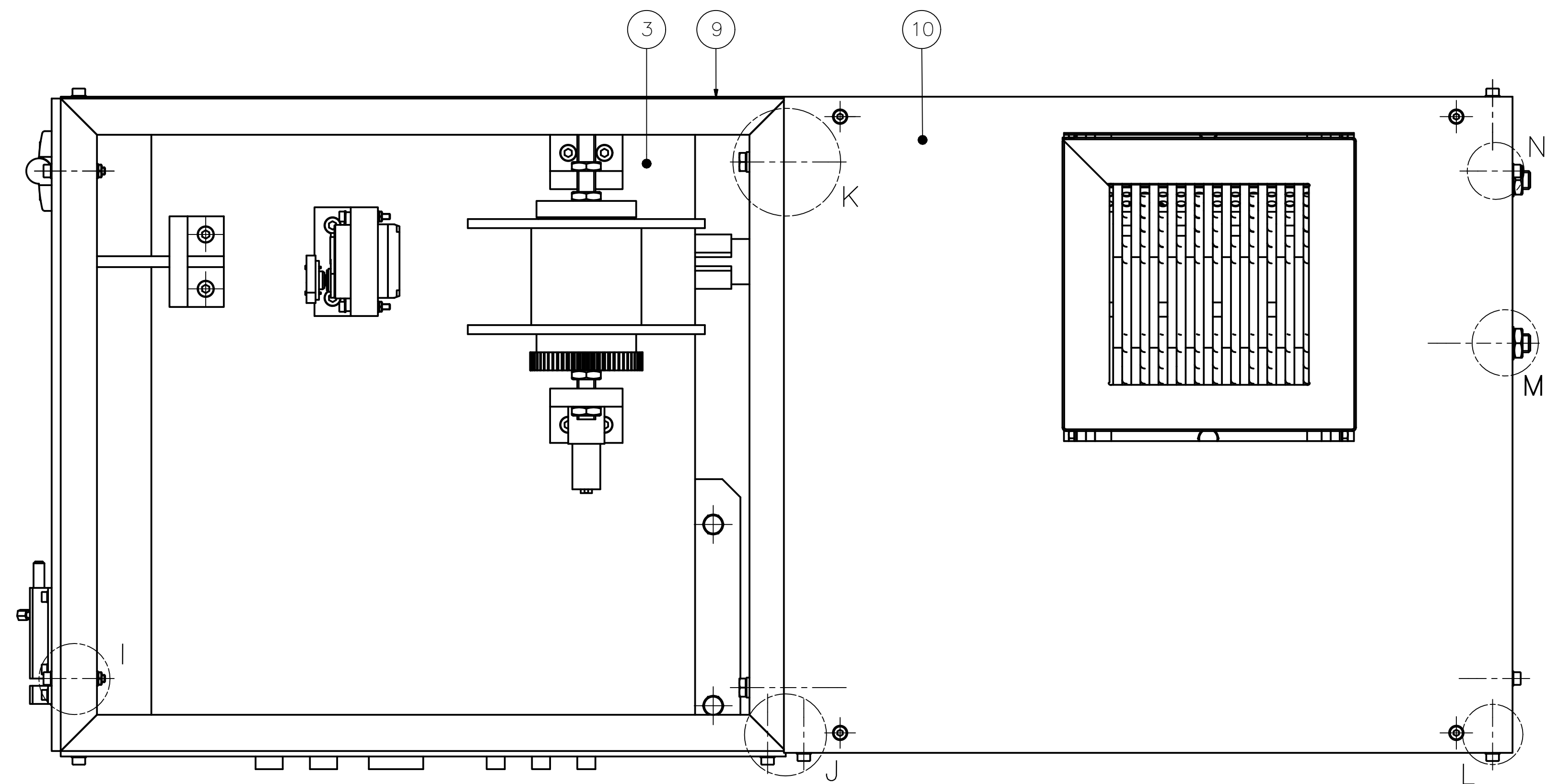
DETALLE J  
ESCALA 2 : 1



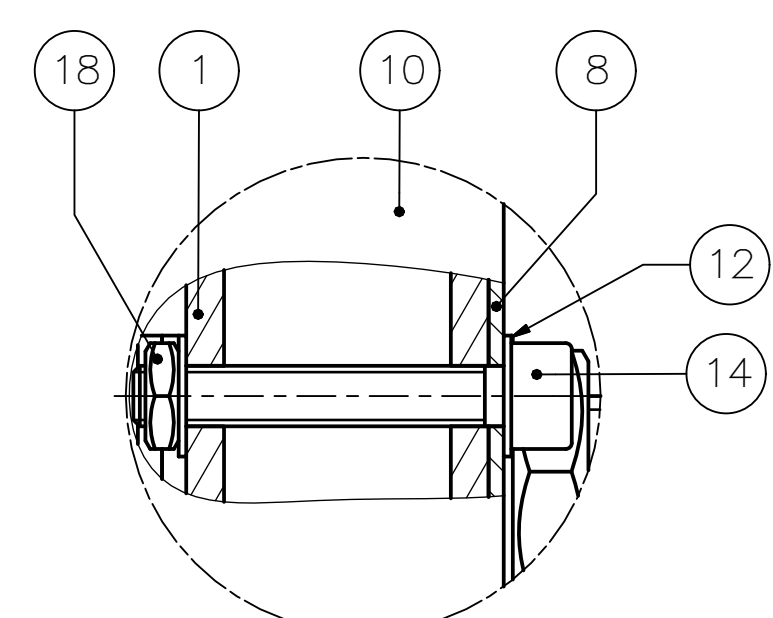
DETALLE K  
ESCALA 2 : 1



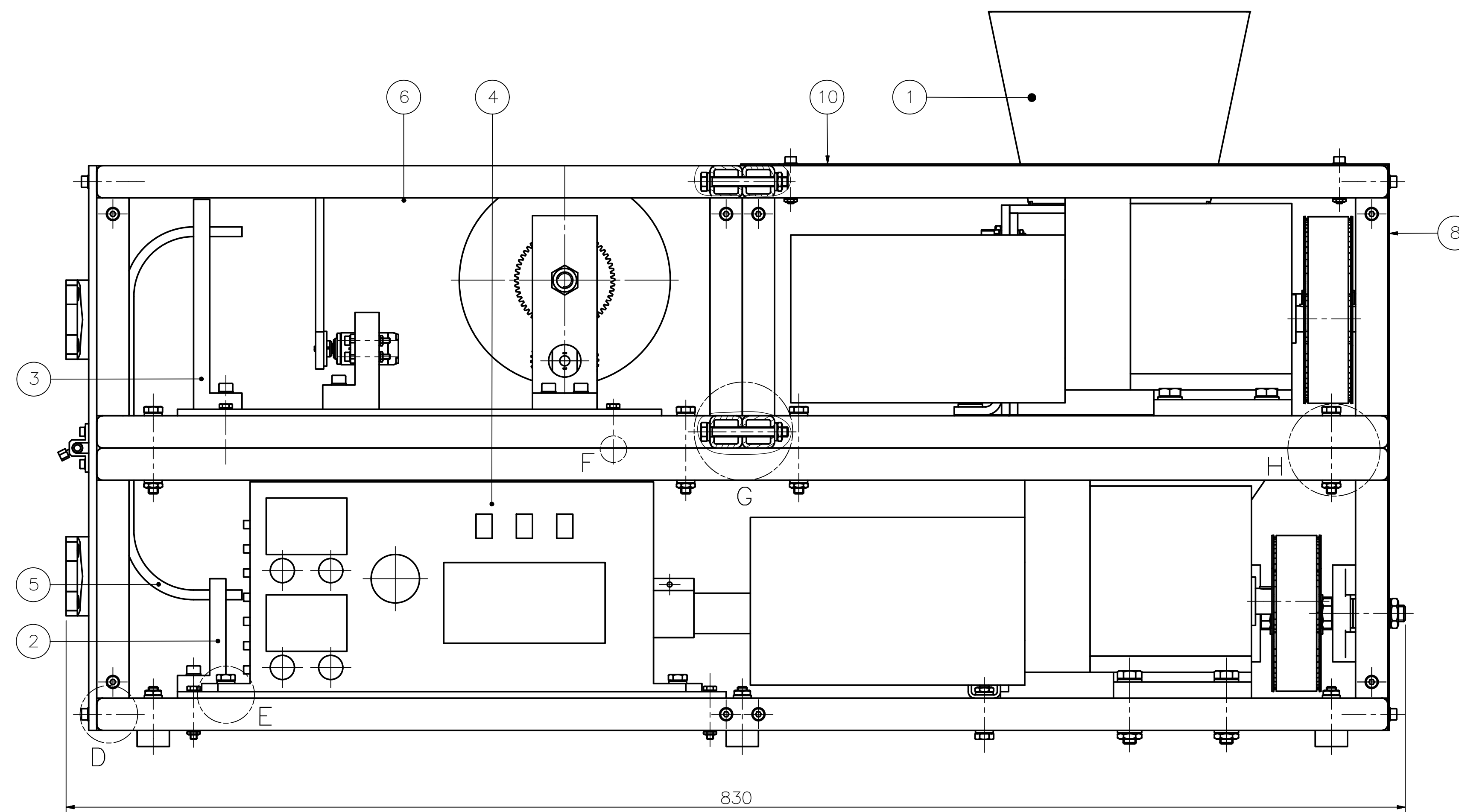
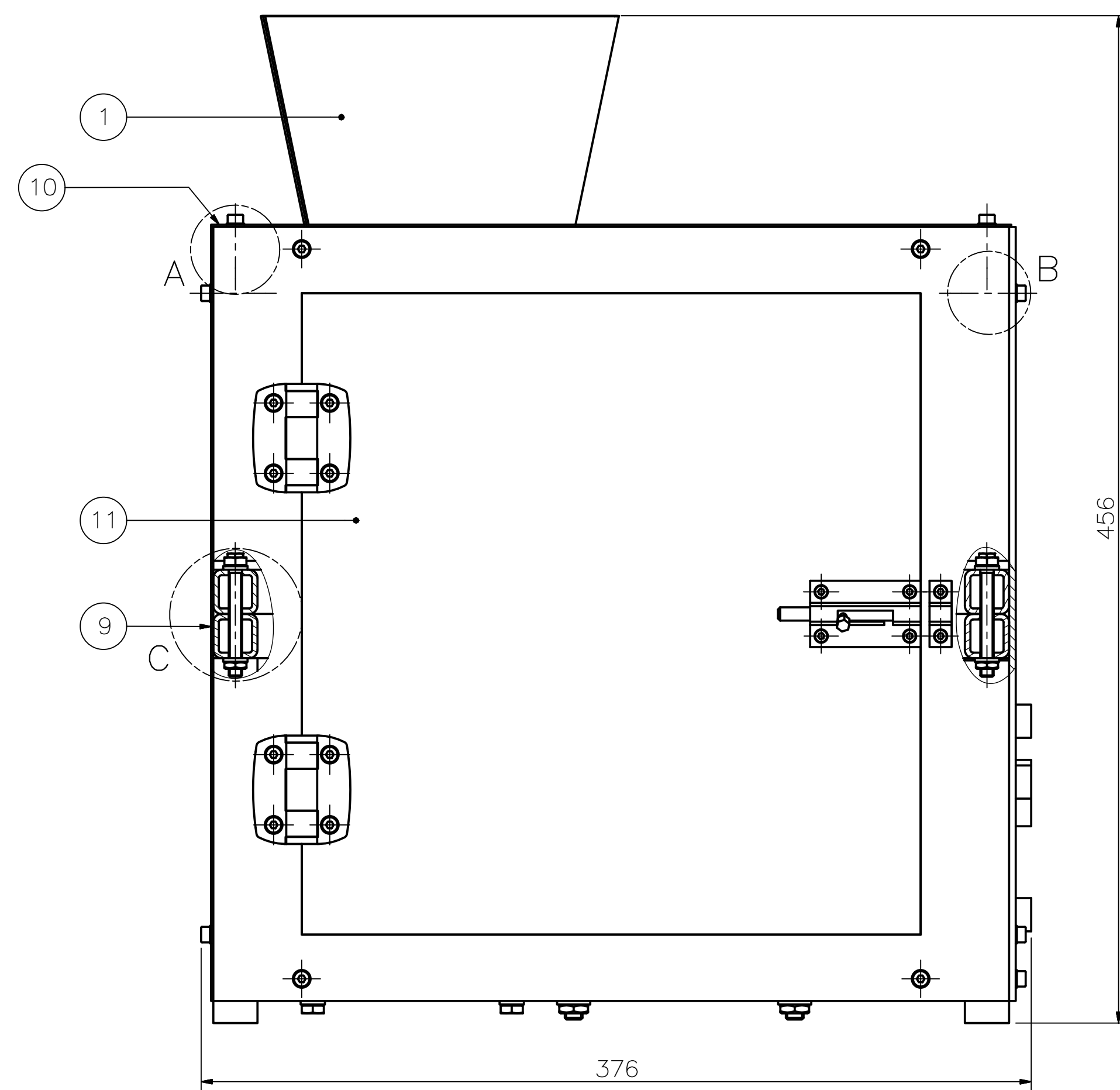
DETALLE L  
ESCALA 2 : 1



DETALLE M  
ESCALA 2 : 1



DETALLE N  
ESCALA 2 : 1



VISTA SIN CARCASAS DELANTERAS  
(ITEMS 6 Y 7)

19	16	TUERCA HEXAGONAL M6	ISO 4035	8	
18	24	TUERCA HEXAGONAL M4	ISO 4035	8	
17	4	PERNO HEXAGONAL M6 x 20	ISO 4017	8,8	
16	12	PERNO HEXAGONAL M6 x 50	ISO 4017	8,8	
15	8	PERNO CABEZA ALLEN M4 x 30	ISO 4762	8,8	
14	16	PERNO CABEZA ALLEN M4 x 25	ISO 4762	8,8	
13	32	ARANDELA ST 6	ISO 7092	SI	
12	48	ARANDELA ST 4	ISO 7092	SI	
11	1	CARCAZA LATERAL SALIDA			VER PD13 - A2
10	1	CARCAZA SUPERIOR TRITURADORA	ASTM A240 INOX 304		VER PD13 - A2
9	1	CARCAZA TRASERA	ASTM A240 INOX 304		VER PD13 - A2
8	1	CARCAZA LATERAL MOTORES	ASTM A240 INOX 304		VER PD13 - A2
7	1	CARCAZA DELANTERA MOTORES	ASTM A240 INOX 304		VER PD13 - A2
6	1	CARCAZA DELANTERA INTERFAZ	ACRILICO		VER PD13 - A2
5	1	CONDUCTO TUBULAR PLASTICO			DIAMETRO INT. 5mm
4	1	CAJA DE CIRCUITOS			ELECTRONICA
3	1	SISTEMA ENROLLADOR			VER PE4 - A2
2	1	SISTEMA EXTRUSOR			VER PE3 - A2
1	1	SISTEMA TRITURADOR			VER PE2 - A2
POS.	CANT.	DESCRIPCION	NORMA	MATERIAL	OBSERVACIONES
PONTIFICIA UNIVERSIDAD CATOLICA DEL PERU					
FACULTAD DE CIENCIAS E INGENIERIA - INGENIERIA MECATRONICA					
METODO DE PROYECCION		DISEÑO DE UNA MAQUINA RECICLADORA ORIENTADA A LA PRODUCCION DE FILAMENTOS DE PLASTICO ABS PARA IMPRESION 3D EN LA PUCP.			ESCALA
		ENSAMBLE GENERAL			1:2
20114479		PORRAS SOLORZANO, JEAN PEARE			FECHA: 2018.10.19
					PLANO: PE1-A0